

ATN PS-27

NIGHT VISION FRONT SIGHTS



operator's manual

Important Export Restrictions! Commodities, products, technologies and services contained in this manual are subject to one or more of the export control laws and regulations of the U.S. Government and they fall under the control jurisdiction of either the US Department of State or the US BIS-Department of Commerce. It is unlawful and strictly prohibited to export, or attempt to export or otherwise transfer or sell any hardware or technical data or furnish any service to any foreign person, whether abroad or in the United States, for which a license or written approval of the U.S. Government is required, without first obtaining the required license or written approval from the Department of the U.S. Government having jurisdiction. Diversion contrary to U.S. law is prohibited.



**AMERICAN
TECHNOLOGIES
NETWORK
CORP.**

Manual (PS-27) Revision 1 - January 2009

The information in this manual furnished for information use only, is subject to change without notice, is not to be construed as a commitment by ATN Corp. ATN Corp. assumes no responsibility or liability for any errors or inaccuracies that may appear in this book.

© 2010 ATN Corp. All right reserved.

SAFETY SUMMARY

STUDY CAREFULLY THIS MANUAL BEFORE TURNING ON AND OPERATING THIS PRODUCT.

CAUTIONS

The ATN PS-27 night vision unit is a precision electron-optical instrument and requires careful handling. To provide safe use of the sight the following instructions should be observed:

- Do not dismantle the unit.
- Keep the unit clean; protect it from moisture, sharp temperature drops and shocks.
- Be careful not to touch the glass surfaces. If you put fingerprints on, or contaminate the glass surfaces, use only clean and soft materials to clean it.
- Protect the unit from excessive lighting. Do not turn the sight on in daylight with the Front Lens Cap off. Do not point the sight at the bright light source (a fire, car headlights, lanterns, street lamps, room lights, etc.).
- Do not test the device in daylight conditions even with the daylight filter/lens cap on for more than ten (10) minutes.
- Do not leave the unit in on position during stops in operation.
- Remove the battery from the unit when storing for periods exceeding 3 days. Failure to do so may damage unit.

CAUTION:

**THIS PRODUCT CONTAINS NATURAL RUBBER LATEX WHICH
MAY CAUSE ALLERGIC REACTIONS.**

EQUIPMENT LIMITATIONS

To avoid physical and equipment damage when using the ATN PS-27, carefully read and understand the following equipment limitations.

- The equipment requires some night light (moonlight, starlight, etc.) to operate. The level of equipment performance depends upon the level of light.
- Night light reduces by passing through the clouds, while operating under trees, at building shadows, etc.
- The equipment is less effective when viewing into shadows and other darkened areas.
- The equipment is less effective when viewing through the rain, fog, sleet, snow or smoke.
- The equipment will not “see” through the dense smoke.

TABLE OF CONTENTS

	pg.
SAFETY SUMMARY	a
SECTION I. INTRODUCTION	1-1
1.1. General	1-2
1.1.1. Scope	1-2
1.1.2. Reports	1-2
1.1.3. Storage	1-2
1.1.4. Warranty	1-3
1.2. Description and Data	1-5
1.2.1. Description	1-5
1.2.2. PS-27 Standard Components and Optional Equipment	1-9
SECTION II. OPERATING INSTRUCTIONS	2-1
2.1. Installation Procedures	2-2
2.1.1. Battery Installation	2-2
2.1.2. Installation on MIL-STD-1913 RAIL	2-3
2.1.3. Installation on dayscope objective lens	2-4
2.2. Operating Procedures	2-7
2.2.1. General	2-7
2.2.2. Controls and indicators	2-7
2.2.3. Operating Procedures	2-8
2.2.4. Stowage of PS-27	2-9
2.3. Installation and Use of Accessories	2-10
2.3.1. 7/8" Weaver Mount	2-10
2.3.2. Adapter for A.R.M.S. mounts	2-11
2.3.3. Remote Control	2-12
2.3.4. Platform Ring	2-12
2.3.5. Long Rail Adapter	2-12
2.3.6. B.A.M. system	2-13
2.3.7. IR450 Illuminator	2-13

SECTION III. OPERATIONAL DEFECTS	3-1
3.1. Zeroing Operational Defects	3-2
3.1.1. Shading	3-2
3.1.2. Edge Glow	3-3
3.1.3. Flashing, Flickering, or Intermittent Operation	3-3
3.1.4. Cosmetic Blemishes	3-3
SECTION IV. MAINTENANCE INSTRUCTIONS	4-1
4.1. Preventive Maintenance Checks and Services (PMCS)	4-2
4.1.1. Purpose of PMCS	4-2
4.1.2. Frequency of performing PMCS	4-2
4.2. Troubleshooting	4-8
4.2.1. General	4-8
4.2.2. Troubleshooting Procedures	4-8
4.3. Maintenance Procedures	4-11
4.3.1. Scope of PS-27 Maintenance	4-11
4.3.2. Cleaning Procedures	4-11
Appendix A. Spare Parts List	A-1
Appendix B. How to select Scope Mounting System	B-1
Appendix C. Estimation of ambient illumination level	C-1
For Technical Information	INFO-1

SECTION I

INTRODUCTION

1.1 GENERAL INFORMATION

1.1.1. SCOPE

This manual contains instructions for use in operating and maintaining the ATN PS-27 Night Vision Front Sights. Throughout this manual, the ATN PS-27 will be referred to as the sights or the PS-27.

1.1.2. REPORTS

Reports from the user on recommendations for improvements are encouraged. Send reports to the address below.

American Technologies Network Corp.
1341 San Mateo Avenue
South San Francisco, CA 94080
(800) 910-2862
(650) 989-5100
(650) 875-0129 fax
www.atncorp.com
info@atncorp.com

1.1.3. STORAGE

Storage of the PS-27 should be done in the factory packing and after a thorough PMCS as outlined in Chapter 3 of this manual. This will ensure the sight remains in mission ready condition during storage. Battery should be stored separately from the sight.

The PS-27 should not be placed on the floor, in any area exposed to high temperatures or direct sunlight. Presence of acid and alkaline vapor, as well as of other aggressive admixtures in the air is unacceptable.

1.1.4. WARRANTY

2 YEAR PRODUCT WARRANTY

This product is guaranteed to be free from manufacturing defects in material and workmanship under normal use for a period of 2 (two) years from the date of purchase. In the event a defect that is covered by the foregoing warranty occurs during the applicable period stated above, ATN, at its option, will either repair or replace the product, and such action on the part of ATN shall be the full extent of ATN's liability, and the Customer's sole and exclusive remedy. This warranty does not cover a product (a) used in other than its normal and customary manner; (b) subjected to misuse; (c) subjected to alterations, modifications or repairs by the Customer or by any party other than ATN without prior written consent of ATN; (d) special order or "close-out" merchandise or merchandise sold "as-is" by either ATN or the ATN dealer; or (e) merchandise that has been discontinued by the manufacturer and either parts or replacement units are not available due to reasons beyond the control of ATN. ATN shall not be responsible for any defects or damage that in ATN's opinion is a result from the mishandling, abuse, misuse, improper storage or improper operation, including use in conjunction with equipment which is electrically or mechanically incompatible with or of inferior quality to the product, as well as failure to maintain the environmental conditions specified by the manufacturer. **CUSTOMER IS HEREBY NOTIFIED THAT OPERATION OF THE EQUIPMENT DURING DAYLIGHT HOURS OR UNDER ANY EXCESSIVE LIGHT CONDITIONS MAY PERMANENTLY DAMAGE THE INTERNAL COMPONENTS OF THE UNIT AND SAID DAMAGE WILL NOT BE COVERED UNDER THIS WARRANTY.** This warranty is extended only to the original purchaser. Any breach of this warranty shall be waived unless the customer notifies ATN at the address noted below within the applicable warranty period.

The customer understands and agrees that except for the foregoing warranty, no other warranties written or oral, statutory, expressed or implied, including any implied warranty of merchantability or fitness for a particular purpose, shall apply to the product. All such implied warranties are hereby and expressly disclaimed.

LIMITATION OF LIABILITY

ATN will not be liable for any claims, actions, suits, proceedings, costs, expenses, damages or liabilities arising out of the use of this product. Operation and use of the product are the sole responsibility of the Customer. ATN's sole undertaking is limited to providing the products and services outlined herein in accordance with the terms and conditions of this Agreement. The provision of products sold and services performed by ATN to the Customer shall not be interpreted, construed, or regarded, either expressly or implied, as being for the benefit of or creating any obligation toward any third party of legal entity outside ATN and the Customer; ATN's obligations under this Agreement extend solely to the Customer.

ATN's liability hereunder for damages, regardless of the form or action, shall not exceed the fees or other charges paid to ATN by the customer or customer's dealer. ATN shall not, in any event, be liable for special, indirect, incidental, or consequential damages, including, but not limited to, lost income, lost revenue, or lost profit, whether such damages were foreseeable or not at the time of purchase, and whether or not such damages arise out of a breach of warranty, a breach of agreement, negligence, strict liability or any other theory of liability.

PRODUCT WARRANTY REGISTRATION

In order to validate the warranty on your product, ATN must receive a completed Product Warranty Registration Card for each unit or complete warranty registration on our website at www.atncorp.com. Please complete the included form and immediately mail it to our Service Center: ATN Corporation, 1341 San Mateo Avenue, South San Francisco, CA 94080.

OBTAINING WARRANTY SERVICE

To obtain warranty service on your unit, End-user must notify ATN service department by calling 800-910-2862 or 650-989-5100 or via e-mail service@atncorp.com to receive a Return Merchandise Authorization number (RMA).

When returning please take or send the product, postage paid, with a copy of your sales receipt to our service center, ATN Corporation at the address noted above. All merchandise must be fully insured with the correct postage; ATN will not be responsible for improper postage or, missing or damaged merchandise during shipment.

When sending product back, please clearly mark the RMA# on the outside of the shipping box. Please include a letter that indicates your RMA#, Name, Return Address, reason for service return, Contact information such as valid telephone numbers and/or e-mail address and proof of purchases that will help us to establish the valid start date of the warranty. Product merchandise returns that do not have an RMA listed may be refused or a significant delay in processing may occur.

Estimated Warranty service time is 10-20 business days. End-user/customer is responsible for postage to ATN for warranty service. ATN will cover return postage/shipping to continental USA end-users/customers after warranty repair only if product is covered by aforementioned warranty. ATN will return product after warranty service by domestic ground service and/or domestic mail. Any other requested, required or international shipping method the postage/shipping fee will be the responsibility of the end-user/customer.

1.2. DESCRIPTION AND DATA

1.2.1. DESCRIPTION

A. Purpose. The PS-27 is an effective night vision system that mounts forward of an existing riflescope/spotting scope (further referred to as a scope) adding night vision capabilities to daytime target acquisition platform. Advisable dayscope magnification is 1X to 12X (2.5X to 8X is optimum). The sight is installed and removed without affecting boresight (permanent boresight alignment).

NOTE

The PS-27 can be installed also forward of viewfinders of various instruments to widen operating illumination range.

B. Principle of Operation. The PS-27 operation is based on the principle of electron-optical intensification of light. The input fast catadioptric lens collects available ambient light from sources such as the moon, stars and skyglow and focuses it on the image intensifier tube photocathode. The tube amplifies the light and produces the viewable image projected by the output lens from the tube screen into the dayscope lens. Thus the sight provides the capability for operator to see through the scope at night.

C. Features and Limitations. The PS-27 has the following important features:

- Available with different generation image intensifier tube.
- Powered by a single alkaline AA or 123A lithium battery.
- Adjusts for lens focus.
- Equipped with manual gain control (MGC version of the sight) for the best possible image contrast under high and low light conditions.
- Is mounted on MIL-STD-1913 rail or dayscope lens.
- Battery life check system.
- Equipped with remote control.

- Has protection system, which cuts off the image intensifier when ambient light level exceeds the limit of 40 lux during a 10 seconds period.
- Is submersible to 10 m for 30 minutes.
- Filled with dry nitrogen to prevent internal fogging.

The PS-27 is an effective night vision system designed for night operations but does have following limitations:

- The sight requires some night light (moonlight, starlight, etc.) to operate. Night light is reduced by such factors as passing cloud cover and objects that produce shadows.
- The sight is less effective viewing through rain, fog, sleet, snow, smoke.
- Under starlight conditions low contrast environments (such as snowcovered territory, sandy deserts, large bodies of water or grassy hills) degrade visibility thereby disguising or masking changes in terrain.
- Under too low-light conditions the sight loses some of the resolution that it has under full moon.

Table 1-1. System Data

ITEM	DATA
Magnification	Unity (1 X)
Boresight Characteristics:	
Accuracy	Factory aligned to ½ MOA or better
Retention	Permanent to within 1 MOA or better
Repeatability	Within ½ MOA
System Resolution subject to Tube Resolution:	
36 to 44 lp/mm	0.38 mrad/lp
45 to 54 lp/mm	0.30 mrad/lp
55 to 64 lp/mm	0.25 mrad/lp
Over 65 lp/mm	0.21 mrad/lp

Table 1-2. Mechanical Data

ITEM	DATA
Dimensions (Length x Width x Height), mm	177 x 85 x 83
Weight:	
without Battery	0.84 kg
with Remote Control, Light Suppressor and Battery	0.91 kg
Height of the Sight Axis above Arm Rail:	
with Quick Release Mount	41.3 mm
with Weaver Mount	40 mm
with A.R.M.S.#19 ACOG Mount	49 mm

Table 1-3. Electrical Data

ITEM	DATA
Battery	One AA (1.5 V) or 123A (3 V)
Consumption Current:	
at 1.5 V	75 mA
at 3.0 V	38 mA
Cell Life at 20 °C:	
AA Alkaline Battery	32 hours
123A Lithium Battery	36 hours

Table 1-4. Optical Data

ITEM	DATA
Objective Lens Focal Length	80 mm
Objective Lens F/number	1:1.23
Objective Lens T/number	1:1.8
Focus Range	10 m to infinity
Field of View	12°
Output Lens Exit Pupil Diameter	40 mm

Table 1-5. Environmental Data

ITEM	DATA
Operating Temperature	-20 to +50 °C
Storage Temperature	-50 to +50 °C
Humidity	95 %, 25 °C to 40 °C for 48 hours
Illumination Required	Natural night illumination (overcast starlight to moonlight)
Immersion	10 m for 30 minutes

1.2.2. PS-27 STANDARD COMPONENTS AND OPTIONAL EQUIPMENT

The PS-27 standard components are shown in Figure 1-1 and presented in Table 1-6.

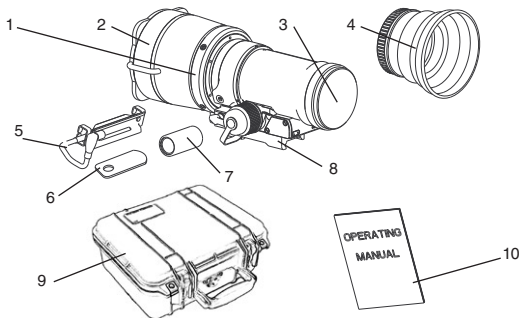


Figure 1-1. PS-27 Standard Components

Table 1-6. PS-27 Standard Components

ITEM	DESCRIPTION	QTY
1	ATN PS-27	1
2	Objective Lens Cap	1
3	Output Lens Cap	1
4	Light Suppressor	1
5	Remote Control	1
6	Wrench	1
7	Battery 123A, Lithium	1
8	Quick Release Mount	1
9	Shipping /Storage Case	1
10	Operating Manual	1

Optional items are shown in Figure 1-2 and listed in Table 1-7.

Figure 1-2. PS-27 Optional Equipment

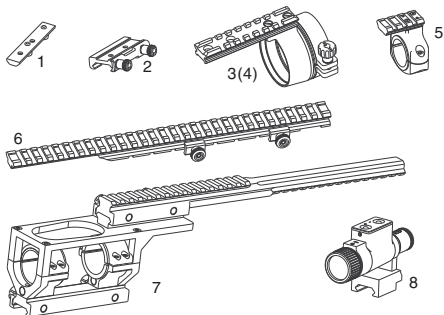


Table 1-7. PS-27 Optional Equipment

ITEM	DESCRIPTION	PART CODE
1	Adapter for A.R.M.S. Mounts	COWSPSAM
2	Weaver Mount	ACDNPS40MWVR
3	Scope Mounting System #1	
4	Scope Mounting System #2	
5	Platform Ring	ACWSRTRA
6	Long Rail Adapter	ACWSLRADPT
7	Boresight Attachment Mount (B.A.M.)	
8	IR450-B4 Illuminator	ACMUIP45B4

SECTION II

OPERATING INSTRUCTIONS

2.1. INSTALLATION PROCEDURES

2.1.1. BATTERY INSTALLATION

CAUTION

Ensure the function switch is in the off position before installing a battery.

Install the battery as follows:

- A.** Observe Figure 2-1 for right position of the threaded insert according to the battery to be installed.
- B.** Unscrew the battery compartment cap and check the insert position.
- C.** Using furnished wrench change the insert position in the cap if necessary.
- D.** Install the battery into the battery compartment. Follow battery symbol on the sight body (see Figure 2-2).
- E.** Replace the battery compartment cap.

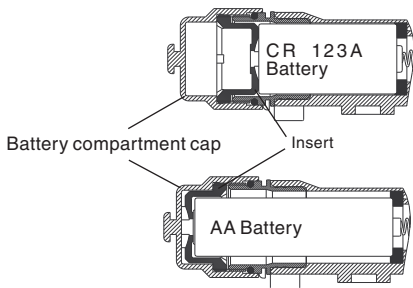


Figure 2-1. Insert Positions in the Battery Compartment Cap

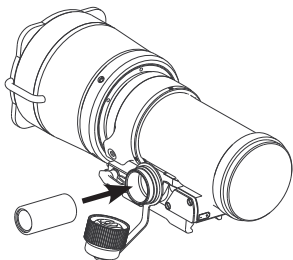


Figure 2-2. Battery Installation

2.1.2. INSTALLATION ON MIL-STD-1913 RAIL

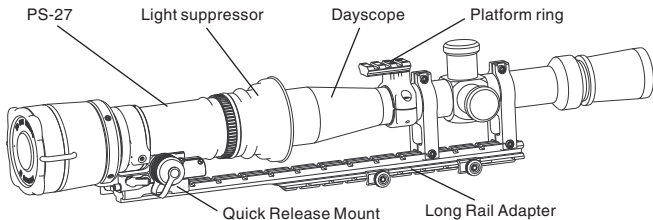


Figure 2-3. PS-27 Installed on MIL-STD-1913 Rail forward of Dayscope

NOTE

The optical axis of the PS-27 and the riflescope should be matched. Difference of the axes position more than 3 mm is not recommended. Measure the height of the riflescope axis above the rail. Observe table 1-2 for the sight axis height above the rail. If the difference in the axis heights of the PS-27 and riflescope is more than 3 mm it is necessary to replace riflescope mounting rings or monoblock by proper ones.

Install the PS-27 on MIL-STD-1913 rail as follows:

- A.** Take off the output lens cap (see figure 1-1) and put it into the storage case.

- B. Remove the light suppressor from the storage case. Put it on in place of the out put lens cap.
- C. To open the sight quick release mount , slide the cam latch forward (arrow A, Figure 2-4) and turn the cam backward (arrow B).
- D. Place the sight onto MIL-STD-1913 rail. Be sure to engage the recoil lug into the groove on the top mounting surface of the rifle. The light suppressor should cover the riflescope objective lens.
- F. Turn the cam forward pushing the latch to close the mount.
- G. The quick release mount may be adjusted to eliminate excessive play when mounted on the rail by using the provided wrench (see figure 1-1) to increase/decrease the cam latch nut. (see figure 2-4)

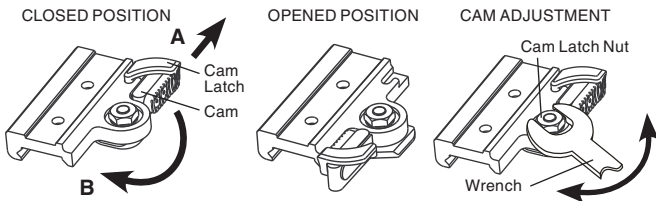


Figure 2-4. Quick Release Mount

2.1.3. INSTALLATION ON DAYSCOPE OBJECTIVE LENS

Presented in Table 2-1 optional scope mounting systems are designed to install the PS-27 on riflescope/sporting scope objective lens. The systems are equipped with a rail for mounting optional IR illuminator.

CAUTION

The PS-27 can not be attached to the riflescope/sporting scope that have a focusing ring on the objective lens housing.

CAUTION

These systems are not recommended for installing the PS-27 on firearms having vigorous recoil (.308 Win. or stronger).

The scope mounting systems and inserts differ in attaching diameters and are supplied on special order, taking into account the parameters of the scope. To choose the system # and insert refer to the Table 2-1. For example, the scope mounting system #1 and 47 mm insert are necessary to mount the PS-27 on Leupold 3.5-10x40 riflescope.

NOTE

Optical axes of the PS-27 and the riflescope should be matched. Difference of the axes position more than 3 mm is not recommended.

Table 2-1. Scope Mounting Systems

SCOPE MOUNTING SYSTEM #	OBJECTIVE LENS DIAMETER (INSERT SIZE), MM	CLEAR APERTURE OF OBJECTIVE LENS, MM	RIFLESCOPE MODEL
1	47	40	Leupold 3.5-10x40 Leupold VX-II 3-9x40
	48	40; 42	Zeiss 1.5-6x42 Swarovski PV-N 2.5-10x42
	49	40; 42	Meopta Artemis 3000 3-9x42
	49.5	40; 42	Meopta Artemis 3000 4-12x40
	50	40; 42	Schmidt & Bender 10x42 PMII
2	56	50	Zeiss 2.5-10x50
	57	50	Schmidt & Bender 3-12x50
	58.7	50	Leupold 4.4-14x50 Leupold VX-III 3.5-10x50

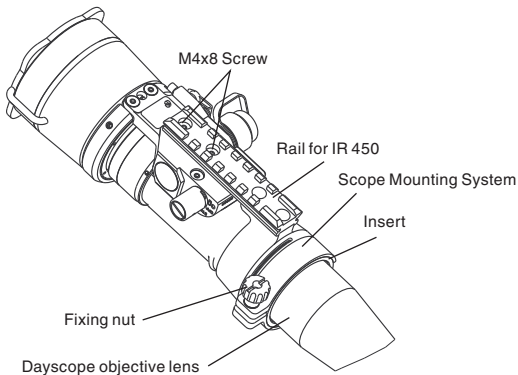


Figure 2-5. PS-27 Installed on Dayscope Objective Lens

Install the PS-27 on dayscope objective lens as follows:

- A.** Loosen and remove two mounting screws M4x8 the quick release mount, remove the mount and put it into the storage case.
- B.** Take off the output lens cap and put it into the storage case.
- C.** Insert the output lens into the scope mounting system and place the rail of the mounting system where the quick release mount was above the battery compartment of the sight.
- D.** Apply a small amount of thread locker on threads, install two screws M4x8 and tighten it.
- E.** Loosen the nut of the mounting system.
- F.** Slide the PS-27 with mounting system onto the objective lens of dayscope up to the stop.
- G.** To complete the installation of the mounting system to your dayscope, use a screw driver to tighten the nut of the mounting system. Do not apply excessive torque.

2.2. OPERATING PROCEDURES

2.2.1. GENERAL

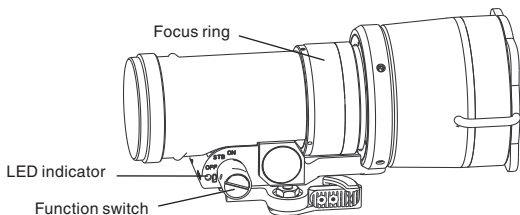
This section contains instructions for placing the PS-27 into operation. The function of controls is explained.

CAUTION

The PS-27 is a precision electro-optical instrument and must be handled carefully at all times.

2.2.2. CONTROLS AND INDICATORS

RIGHT SIDE VIEW



LEFT SIDE VIEW

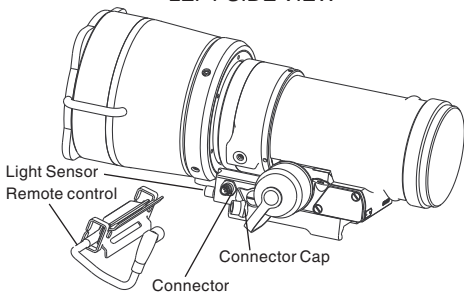


Figure 2-6. PS-27 Controls and Indicators

Table 2-2. PS-27 Controls and Indicators

CONTROLS	FUNCTION
Function Switch	BATTERY — the sight is in battery check mode. Switch's spring is loaded.
	OFF — the sight is off.
	STB — the sight is in standby mode.
	ON — the sight is on. Switch's spring is loaded.
Focus Ring	Focuses the input lens. Adjusts for sharpest view of scene.
Remote control	Switches the sight from STB to operating mode.
Gain Control Knob*	Adjusts for image contrast.
LED Indicator	Green glow indicates high light conditions. After 10 seconds the image intensifier will be cut off.
	Permanent red glow indicates normal battery.
	Flashing red light indicates low battery.

* - For MGC version of the sight.

2.2.3. OPERATING PROCEDURES

These procedures should be performed under night light conditions only.

CAUTION

Use of the PS-27 under high light conditions may damage the image intensifier.

- A.** Make sure the battery is installed as indicated on the sight body.
- B.** Make visual estimation of the illumination level in the viewing area is less than 1 lux (late twilight sky conditions).

C. Remove the Front Lens Cap and place it over the lens housing.

CAUTION

Ensure the light sensor is open before removing the objective lens cap.

D. Turn the power switch to the ON position. A green glow will appear in the scope eyepiece (after a slight delay).

E. Observe the scene and adjust focus rotating focusing ring to achieve sharp image.

CAUTION

Bright sources such as light of fire, headlights, searchlights, etc. can damage the PS-27. Avoid exposing the PS-27 to these types light sources.

F. Adjust image tube brightness using the gain control knob (MGC version of the sight) to achieve the best possible image contrast.

G. If the riflescope has focusing rings (parallax adjustment knob), adjust focus for parallax free image.

H. If the scope has reticle illumination, switch it on and adjust reticle brightness.

I. PS-27 Shut-Down

(1) Turn the function switch to OFF position. The green of the image intensifier tube glow will fade to black.

(2) Replace the protective cover on the input lens.

(3) If necessary remove the sight from the rail (from the scope lens) remove the sight in reverse order of the installation instructions.

(4) Unscrew the battery cap and take out the battery. Replace the battery cap. Do not store the PS-27 with the battery still in it.

(5) Return the sight and all accessories to the case.

2.2.4. OPERATING AT CHANGING LIGHT CONDITIONS

The sight has a protection system, which cuts off the image intensifier when ambient light level exceeds the limit of 40 lux during 10 seconds. If a mission has to be carrying out at changing light conditions, it is possible to shut down the protection system with the following procedure: take off the rubber cap from remote switch connector and put it onto the light sensor (see Figure 2-6).

CAUTION

Do not forget to open the light sensor and put the cap back onto the connector after finishing your mission.

2.2.5. STOWAGE OF PS-27

- A.** Ensure the PS-27 and all accessories are clean and dry before returning to storage case.
- B.** Replace the objective cap and output cap on the lenses. Remove the battery.
- C.** Make sure the sight and accessories are stored in the appropriate locations in the case and close the cover.

2.3. INSTALLATION AND USE OF ACCESSORIES

2.3.1. 7/8" WEAVER MOUNT

Optional Weaver mount can be used to install the PS-27 on a MIL-STD-1913 rail if mounting rail on the rifle has narrow grooves (4 mm).

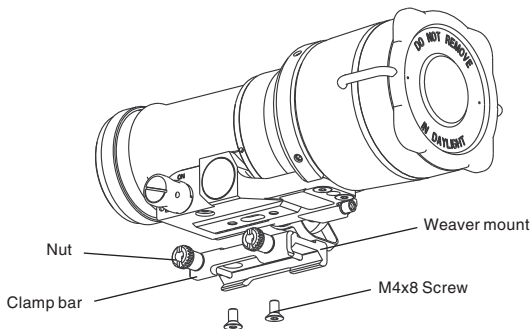


Figure 2-7. Assembling PS-27 with Weaver Mount

- A.** Loosen and remove two screws (M4x8) which secure the quick release mount to the sight body. Remove the mount.
- B.** Put the Weaver mount onto the lug on the sight body. The nuts of the mount have to be placed on the same side as the switch knob. Apply a small amount of thread locker on threads, install two screws (M4x8) and tighten it.
- C.** Loosen the mount nuts and pull the clamp bar back against the nuts.
- D.** Place the sight onto the rail surface. Be sure to engage the mount studs into the grooves on the top mounting surface of the rifle. The light suppressor should cover the riflescope objective lens.
- F.** Tighten the nuts using screwdriver.

2.3.2. ADAPTER FOR A.R.M.S. MOUNTS

The PS-27 can be installed on MIL-STD-1913 rail by means of using an A.R.M.S. #10 or A.R.M.S. #19 ACOG mounts. Optional adapter is used to attach the sight to the said mounts.

- A. Loosen and remove two screws (M4x8) that secure the quick release mount to the sight body. Remove the mount.
- B. Loosen and remove two screws (M5x8) installed in the adapter.
- C. Put the adapter on the sight body. The adapter should not protrude out beyond the back of the sight body. Apply a small amount of thread locker on threads, install two screws M4x8 and tighten it.
- D. Place the A.R.M.S. mount onto the sight. Apply a small amount of thread locker on threads, install two screws M5x8 and tighten.

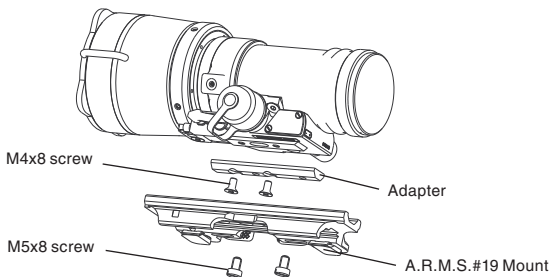


Figure 2-8. Assembling PS-27 with A.R.M.S. Mount using Adapter

2.3.3. REMOTE CONTROL

Remote control is designed to operate the PS-27 in short-time activation mode.

Attach the remote control to the PS-27 and use it as follows:

- A. Remove the cap from the remote switch connector.

- B.** Attach the remote control to the connector and secure with the captive nut.
- C.** Place the remote switch on the fore-end of rifle stock and with Velcro tape.
- D.** Turn the function switch in standby position (STB). To activate the sight, press and hold the pressure switch.
- E.** After disconnecting the remote control, replace the cap onto the connector.

2.3.4. PLATFORM RING

If the PS-27 is installed on MIL-STD-1913 rail, optional platform ring is used for mounting optional IR illuminator on dayscope having mounting diameter 25.4 or 30 mm (see Figure 2-3).

Attach the platform ring to your dayscope as follows:

- A.** Unscrew the two screws securing top and bottom halves of the platform ring.
- B.** If the diameter of your scope tube is 30 mm, remove plastic inserts.
- C.** Place the top and lower parts of the platform ring around the dayscope tube.
- D.** Secure the two screws set using screwdriver. Do not apply excessive torque.

2.3.5. LONG RAIL ADAPTER

Optional long rail adapter can be used if the firearm has a short scope mounting rail which prevents the installation of the PS-27 forward of dayscope (See Figure 2-3).

2.3.6. B.A.M. SYSTEM

Optional B.A.M. system (Boresight Attachment Mount) is used to install the PS-27 and dayscope on the rifles having short mounting MIL-STD-1913 rail. There are three advantages of the system:

- Low position of the sight and dayscope (36 mm above the rail).

- Incline of the axis of the dayscope and the sight on 20 angular minutes for long range firing.
- Resistance on the rifle with vigorous recoil.

Installation procedure is described in the system user's guide.

2.3.7. IR ILLUMINATOR

Optional IR450-B4 illuminator provides the capability for operator to use the PS-27 under extremely low light conditions and in total darkness. The IR illuminator can be mounted on rail of the platform ring (Figure 2-3) or of the scope mounting system (Figure 2-5), or on top rail of the B.A.M. system.

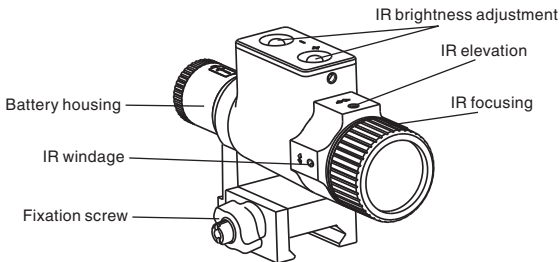


Figure 2-9. IR450-B4

The IR illuminator control buttons are located on its side. To switch the Digital IR illuminator on/off press “+” and “-” buttons simultaneously. When the IR illuminator is switched on you can see the green LED lit. By pushing the buttons “+” and “-” you may adjust the IR brightness.

The IR beam is focusable to change the field of coverage. To change the beam width slightly turn the IR lens.

You can change the position of the IR control panel to meet your needs. The wrench included into the set should be used for loosening the nut located on the body of the IR. Rotate the IR to the desired position. Tighten the nut with the wrench to secure the new position.

SECTION III

OPERATIONAL DEFECTS

3.1. ZEROING OPERATIONAL DEFECTS

Operational defects refer to the reliability of the image intensifiers and are an evidence of instability. Their identification shall be a valid reason to immediately refuse to accept the ATN PS-27. These include shading, edge glow, flashing, flickering, and intermittent operation.

3.1.1. SHADING

If shading is persistent, you will not see a fully circular image (Figure 3-1). Shading is very dark and you cannot see an image through it. Shading always begins on the edge and migrates inward eventually across the entire image area. Shading is a high contrast area with a distinct line of demarcation. Contact ATN or point of purchase for warranty/repair procedures.

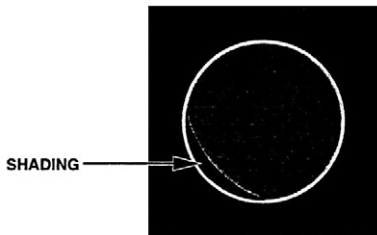


Figure 3-1
Shading

NOTE

Make sure the shading is not the result of improper exit pupil position.

3.1.2. EDGE GLOW

Edge glow is a bright area (sometimes sparkling) in the outer portion of the viewing area (see Figure 3-2). To check for edge glow, block out all light by cupping a hand over the lenses. If the image tubes are displaying edge glow the bright area will still show up. Contact ATN or point of purchase for warranty/repair procedures.

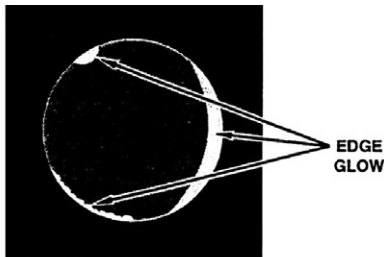


Figure 3-2
Edge Glow

3.1.3. FLASHING, FLICKERING, OR INTERMITTENT OPERATION

The image may appear to flicker or flash. If there is more than one flicker, check for loose battery adapter or weak battery. Contact ATN or point of purchase for warranty/repair procedures.

3.1.4. COSMETIC BLEMISHES

These are usually the result of manufacturing imperfections that do not affect image intensifiers reliability and are not normally a reason to claim for warranty or repair work. However, some types of blemishes can get worse over time and interfere with the usability of the device. If you believe a blemish is a cause for rejection, warranty or repair please ATN or point of purchase for warranty/repair procedures.

A. Bright Spots.

A bright spot is a small, non-uniform, bright area that may flicker or appear constant (Figure 3-3).

Not all bright spots make the ATN PS-27 rejectable. Cup your hand over the lenses to block out all light. If the bright spot remains, return the ATN PS-27. Bright spots usually go away when the light is blocked out. Make sure any bright spot is not simply a bright area in the scene you are viewing. **Bright spots are acceptable if they do not interfere with the ability to view the outside scene.**

B. Emission Points.

A steady or fluctuating pinpoint of bright light in the image area and does not go away when all light is blocked from the objective lenses of the Front Sight (Figure 3-3). The position of an emission point within the image area does not move. Not all emission points make the ATN PS-27 rejectable. Make sure any emission point is not simply a point light source in the scene you are viewing. **Emission points are acceptable if they do not interfere with the usability of the device.**

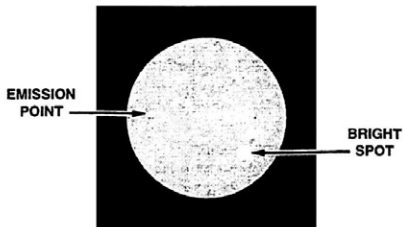


Figure 3-3
Bright Spots and Emission Points

C. Black Spots.

These are cosmetic blemishes in the image intensifiers or dirt or debris between the lenses. Black spots are acceptable as long as they do not interfere with viewing the image. **No action is required if this condition is present unless the spots interfere with the usability of the device.**

D. Fixed-Pattern Noise.

This is usually a cosmetic blemish characterized by a faint hexagonal (honeycomb) pattern throughout the viewing area that most often occurs at high light levels or when viewing very bright lights (See Figure 3-4). This pattern can be seen in every image intensifier if the light level is high enough. **This condition is acceptable as long as the pattern does not interfere with viewing the image and usability of the device.**

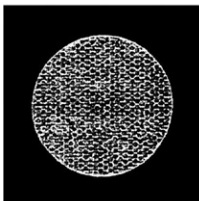


Figure 3-4
Fixed-Pattern Noise

E. Chicken Wire.

An irregular pattern of dark thin lines in the field of view either throughout the image area or in parts of the image area (See Figure 5-5). Under the worst-case condition, these lines will form hexagonal or square-wave shaped lines. This is typically viewed in high light conditions. **No action is required if this condition is present unless it interferes with the viewing the image and interferes with the users usability of the device.**



**Figure 3-5
Chicken Wire**

SECTION IV

MAINTENANCE INSTRUCTIONS

4.1. PREVENTIVE MAINTENANCE CHECKS AND SERVICES (PMCS)

4.1.1. PURPOSE OF PMCS

PMCS is performed daily when in use to be sure that the sight is ready at all times. Procedures listed in Table 3-1 are a systematic inspection of the PS-27 that will enable you to discover defects that might cause the sight to fail on a mission.

4.1.2. FREQUENCY OF PERFORMING PMCS

The frequency of performing PMCS is as follows:

- A. Daily when the sight is in use.
- B. When it is removed from the case for any reason.

Table 4-1. Preventive Maintenance Checks and Services

SEQ. NO.	ITEM TO CHECK	CHECKING PROCEDURE	NOT FULLY MISSION CAPABLE IF:
BEFORE OPERATION CHECKS			
1	Completeness	Inventory items by means of comparing with the data specified in this manual.	Items missing.
2	Sight Body	Inspect for missing screws or connector cap.	Screws or connector cap missing.
3	Objective Lens Cap	Inspect for cuts, tears and dirt. Clean as required.	Cap torn or cut.
4	Output Lens Cap	Inspect for dirt or O-ring damage. Clean as required.	Cap is not held up on the lens housing.

Table 4-1. Preventive Maintenance Checks and Services

SEQ. NO.	ITEM TO CHECK	CHECKING PROCEDURE	NOT FULLY MISSION CAPABLE IF:
5	Battery Compartment	Check for corrosion, springs tension, cap damaged or retainer broken. Check O-ring for cuts or damage.	Springs corroded or damaged. Retainer broken. Cap or O-ring damaged or missing.
6	Function Switch	Check for operation (without battery).	Switch inoperative. Knob missing.
7	Lenses	Inspect for cleanliness, scratches, chips or cracks. Clean as required.	Chipped, cracked or if scratches hinder vision through the sight.
8	Objective Lens	Check to ensure the objective lens is not loose.	Objective lens loose.
9	Focus Ring	Check to ensure: — the focus ring cannot be moved along the sight body; — there is free rotation through full range of travel (3/4 turn); — driving ring and threaded ring (see Figure 3-1) are rotated together.	Focus ring moves along sight body or bounded. Driving ring rotates while threaded ring does not move. That affects ability to focus properly.

Table 4-1. Preventive Maintenance Checks and Services

SEQ. NO.	ITEM TO CHECK	CHECKING PROCEDURE	NOT FULLY MISSION CAPABLE IF:
10	Remote Control	Check cable and switch for damage. Check Velcro tape for wear. Ensure the remote control connects to the sight connector securely.	Cable or switch damaged. Velcro tape missing. Connector damage affects ability to connect the remote control to the sight.
11	Light Suppressor	Inspect for cuts, tears. Check ease of installation and removal.	Suppressor torn or cut.
12	Quick Release Mount	Check for damage or corrosion. Check for proper operation.	Mount body, latch or cam damaged.
13	Optional equipment	Inspect for damage and parts missing. Check for proper operation.	Equipment damaged. Missing of some parts.
14	Installation Security	Make sure that the sight installed on the arm rail does not have any movement. Tighten tension nuts if necessary.	

Table 4-1. Preventive Maintenance Checks and Services

SEQ. NO.	ITEM TO CHECK	CHECKING PROCEDURE	NOT FULLY MISSION CAPABLE IF:
OPERATIONAL CHECKS			
<p>CAUTION: Activate the PS-27 in daylight with objective lens cap on or low light conditions.</p> <p>NOTES: 1. PMCS checks for daylight conditions are listed below. 2. When looking through the PS-27 with objective lens cap on, observable image has a form of two overlapping zones. It is not a defect.</p>			
15	Function Switch	Insert battery. Remove output lens cap. Turn the switch to the BATTERY position. Look for red glow of indicator.	Red glow absent.
		Turn the switch to ON position. Look for green glow of indicator.	Indicator green glow absent.
		Close light sensor with your finger. Look for image in output lens.	Image absent.
		Remove your finger from light sensor. Look through output lens and wait about 10 seconds for image disappearance.	Image present.

Table 4-1. Preventive Maintenance Checks and Services

SEQ. NO.	ITEM TO CHECK	CHECKING PROCEDURE	NOT FULLY MISSION CAPABLE IF:
16	Remote control	Take connector cap off. Connect the remote control to the sight. Turn function switch to STB position. Press and hold the remote control key. Look for green glow in output lens. Release the key. Turn the switch to OFF position.	Green glow absent.
17	Viewed Image	Check for flickering, flashing, bright spots, edge glow, shading, excessive fixed-pattern noise (honey-comb).	Excessive cosmetic defects or fixed pattern noise.
AFTER COMPLETING THE PMCS CHECKS LISTED			
18		Replace protective cap on output lens. Disconnect remote control and put remote switch connector cap on. Remove battery. Place the sight and all accessories to storage case.	

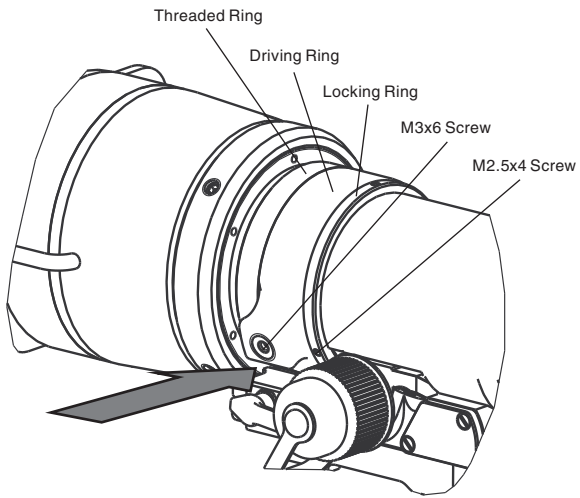


Figure 4-1. Focusing Assembly

4.2. TROUBLESHOOTING

4.2.1. GENERAL

This section contains information for locating and removal most of the PS-27 operating troubles which may occur. Each malfunction for an individual component or assembly is followed by a list of tests or inspections that will help determine probable causes and corrective action to take. Perform the tests/ inspections and corrective actions in the order listed.

This manual cannot list all possible malfunctions that may occur, or all tests or inspections and corrective actions. If a malfunction is not listed (except when malfunction and cause are obvious), or is not corrected by listed corrective actions, contact to the service center.

4.2.2. TROUBLESHOOTING PROCEDURES

Troubleshooting procedures are listed in Table 4-2.

Table 4-2. Troubleshooting Procedures

PROBLEM	PROBABLE CAUSE	CORRECTIVE ACTION
Sight will not come on.	Battery is missing or improperly installed.	Insert battery or install correctly.
	Battery is dead.	Replace battery.
	Battery contact surfaces or contact springs dirty or corroded.	Clean the contact surfaces with a pencil eraser and/or alcohol and cotton swabs.
	Defective image tube.	Send the sight to the service center.

Table 4-2. Troubleshooting Procedures

PROBLEM	PROBABLE CAUSE	CORRECTIVE ACTION
<p>Cannot achieve the sharp image of the object.</p>	<p>Objective and output lenses dirty.</p>	<p>Clean thoroughly the lenses surfaces.</p>
	<p>Driving ring rotates while threaded ring does not move (see Figure 3-1).</p>	<p>(1) Using hex wrench tighten M3x6 screw which secures driving ring on threaded ring. (2) Point the sight to an object situated at a distance more than 100 m from you. Rotate focus ring to achieve sharp image of the object. (3) Loosen the M3x6 screw and turn the driving ring counter-clockwise to obtain a gap under driving ring lug equal to the thickness of your thumb. (The gap is indicated with arrow, Figure 3-1). (4) Tighten the M3x6 screw.</p>
	<p>Damaged optical components.</p>	<p>Send the sight to the service center.</p>

Table 4-2. Troubleshooting Procedures

PROBLEM	PROBABLE CAUSE	CORRECTIVE ACTION
Cannot achieve the sharp image of the object	Focus ring able to move along the sight body. Locking ring loose (see Figure 3-1).	(1) Loosen three screws M2.5x4 more than a turn. (2) Tighten the locking ring and fix it with the screws. (3) Rotate focus ring slightly clock-wise/counterclockwise. Repeat the steps 1-3 three times. (4) Remove the screws M2.5x4, apply a small amount of thread locker on threads, install the screws and tighten.
Sight affects boresight after installation or during the firing.	Objective lens loose.	Send the sight to the service center.
	Factory alignment broken.	Send the sight to the service center.

4.3. MAINTENANCE PROCEDURES

4.3.1. SCOPE OF PS-27 MAINTENANCE

The PS-27 maintenance consists of external inspection of its components for serviceability, cleaning and installation of the standard and optional accessories. Maintenance instructions covered elsewhere in this manual (PMCS, troubleshooting, etc.) are not repeated in this section.

CAUTION

The PS-27 is a precision electro-optical instrument and must be handled carefully at all times to prevent damage.

4.3.2. CLEANING PROCEDURES

A. Cleaning of the PS-27

- (1) Gently brush off any dirt from the sight body using only a clean soft cloth.
- (2) Moisten the cloth with fresh water and gently wipe the external surfaces (except glass surfaces).
- (3) Dry any wet surfaces (except lenses) with another dry and clean soft cloth.
- (4) Using lens brush, carefully remove all loose dirt from glass surfaces.
- (5) Slightly dampen a cotton swab with ethanol and lightly and slowly wipe the lenses and the light sensor. Clean the glass surfaces by circular movements from the centre to the edge, not touching the lens holders and changing cotton swab after each circular stroke. Repeat this step until the glass surfaces are clean.

B. Cleaning of accessories

Clean accessories with a soft brush (cloth) and soap and water as required.

CAUTION

Dry thoroughly each item before replacing into the storage case.

APPENDIX A

SPARE PARTS LIST

The Spare Parts List is an illustrated catalog of main parts and assemblies completing the Night Vision Attachment PS-27, here in after referred to as PS-27.

Therefore, in case of failure of any part or assembly User could replace it by ordering the corresponding part/assembly from the Spare Parts List. The amount and assortment of the spare parts needed should be arranged with each contract individually.

Table A-1. ATN PS-27 spare parts list

PART NO.	DESCRIPTION	FIG	ITEM
AT 146552.800	PS-27 Night Vision Front Sight	A1	
AT 146552.801	Objective Lens Cap	A1	1
AT 146552.802	Front Sight	A1	2
AT 146552.803	Output Lens Cap	A1	3
AT 146552.803	Quick Release Mount	A1	4
AT 146552.804	Battery Cap	A1	5
AT 146552.805	Insert	A1	6
CR123A	Lithium Battery, CR123A type	A1	7
AT 146552.700	Accessories 1 (From the Kit)	A2	
AT 146552.701	Light Suppressor	A2	1
AT 541002.713	Remote Control	A2	2
AT 146552.703	Wrench	A2	3
AT 146552.704	Storage/shipping case	A2	4
AT 146552.705	Operator's Manual	A2	5

Table A-1. ATN PS-27 spare parts list

PART NO.	DESCRIPTION	FIG	ITEM
AT 146553.700	Accessories 2 (Optional)	A3	
AT 146553.701	Adapter for A.R.M.S. mount	A3	1
AT 146553.702	7/8" Weaver Mount	A3	2
AT 146533.702	Platform Ring	A3	3
AT 146533.741	Long Rail Adapter	A3	4
AT 146553.703	B.A.M. system	A3	5
AT 146533.555	IR Illuminator IR450	A3	6
AT 146553.704	Scope Mounting System #1	A3	7
AT 146553.705	Scope Mounting System #2	A3	8

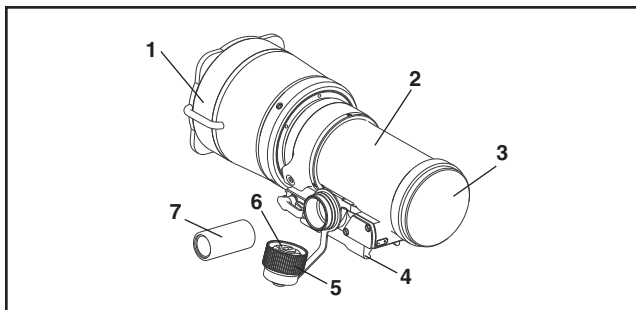


Figure A-1. PS-27 Night Vision Front Sight

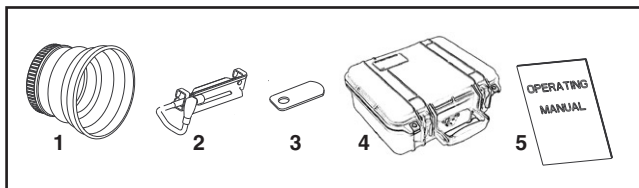


Figure A-2. Accessories 1 (From the Kit)

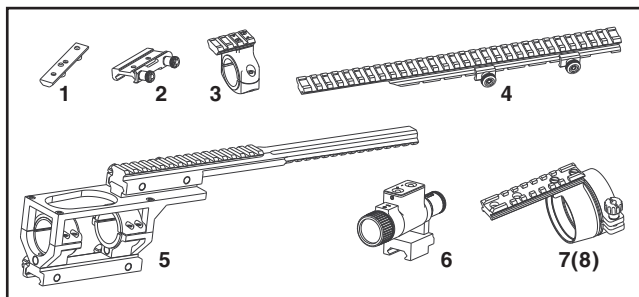


Figure A-3. Accessories 2 (Optional)

APPENDIX B

HOW TO SELECT SCOPE MOUNTING SYSTEM REQUIRED FOR YOUR DAYTIME SCOPE

By selecting the appropriate Scope Mounting System (with Inserts) you can mount the PS-27 onto a daytime scope with an objective tube diameter from 47 to 58,7 mm. At the Table 2-1 Scope Mounting System sizes (#1-2) and Insert sizes for different scope examples are provided.

If your specific daytime scope is not listed in Table 2-1, before mounting procedure you have to select the proper Scope Mounting System (and Insert) required.

To do this, perform the following actions:

- 1) Determine your daytime scope objective tube diameter (external - not diameter of the glass lens) with a metric ruler (with a trammel for more accurate results) as shown in figure B-1.
- 2) Select from the Table 2-1 the Insert size closest (larger) to the value measured (Insert size is also specified at an Insert body). Do the selection in Insert group that corresponds to the same Scope Mounting System (for example, Scope Mounting System #2).
- 3) The Scope Mounting System you need is the one that corresponds to Insert size selected at the Table B-1.

For example, if your scope objective tube diameter is equal to 56 mm then you should select Insert with size of 56 mm and corresponding Scope Mounting Systems #1 from the Table 2-1.

Figure B-1.
Objective tube diameter
measuring



APPENDIX C

ESTIMATION OF AMBIENT ILLUMINATION LEVEL

Some of usual natural light conditions and corresponding representative illumination values are presented in Table C-1.

Table C-1.
Standard Natural Light Conditions and Illumination Values

STANDARD NATURAL LIGHT CONDITIONS	ILLUMINATION VALUE, LUX
Quarter moon	0.05
Full moon	0.30
Late twilight sky	1.00
Twilight sky	10.00
Overcast sky in the daytime	500.00

FOR TECHNICAL INFORMATION

ATN CORP.

1341 San Mateo Avenue
South San Francisco, CA 94080

(800) 910-2862
(650) 989-5100 tel.
(650) 875-0129 fax

www.atncorp.com
info@atncorp.com



For customer service and
technical support, please contact
American Technologies Network Corp.

North American Office:

1341 San Mateo Avenue

South San Francisco, CA 94080

phone: 800-910-2862, 650-989-5100

fax: 650-875-0129

www.atncorp.com